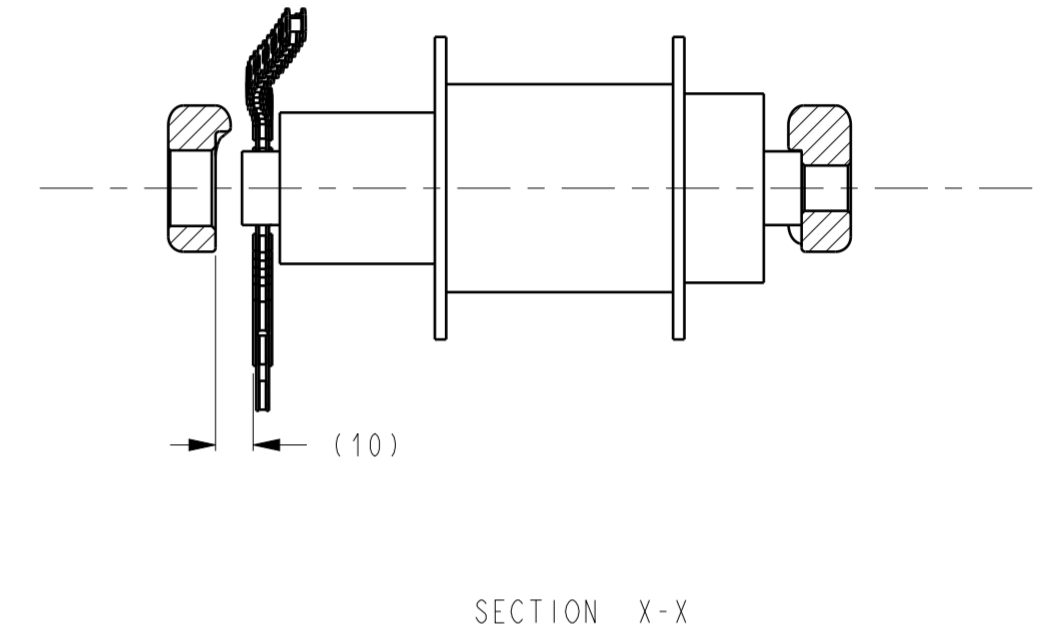
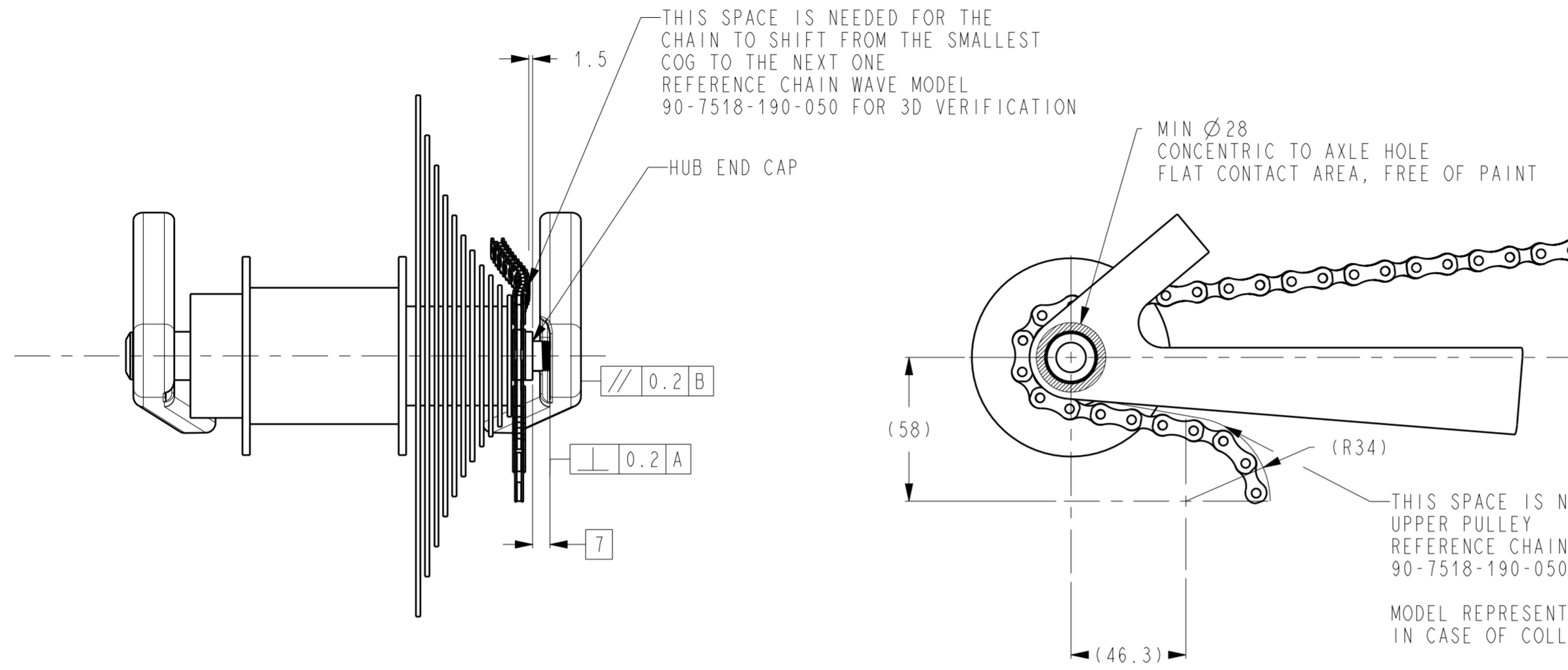
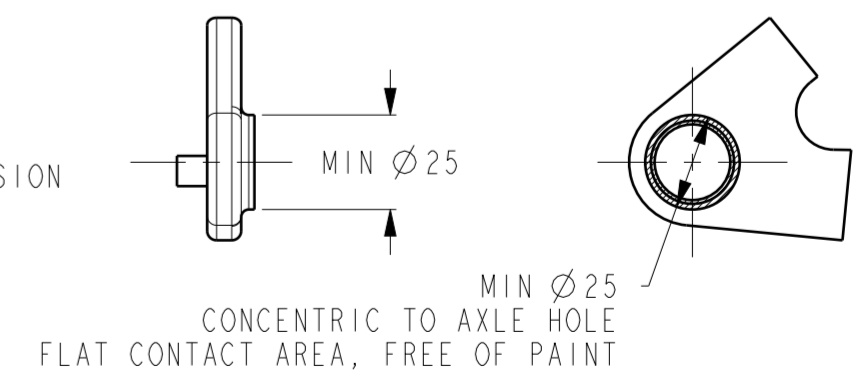


NAMED 3D MODELS CAN BE FOUND IN "UDH&FULL_MOUNT_RD_3D_MODELS_REV_G.stp".

REV	RESP ENG	REVISION RECORD
C	SDUEWELING	ADD: VIEW (SHEET1, C13), 0-0.5 (BROKEN EDGE) (SHEET 2, D14) CHANGE: VIEW (SHEET 1, C8); 90-7518-150-050 WAS chain_wave_asm.stp (SHEET 1, B5)
D	HREDECKER	ADD: NOTE (SHEET 2, J6-12), NOTE (SHEET 4, B6-9, E6-9), SHEET 5 REMOVE: VIEW (SHEET1, F2-4)
E	THARCKE	ADD: UDH HANGER DIMENSIONS (SHEET 6); FRONT CABLE ENTRANCE DUMMY 90-7518-190-090 (SHEET 5, G7, J7); AND FRONT CABLE ENTRANCE DUMMY 90-7518-190-090 (SHEET 4, C7); CHANGE: REAR CABLE ENTRANCE DUMMY (SHEET 5, D11) WAS REAR CABLE EXIT DUMMY;
F	TBRAKOWSKI	ADD: NOTE (SHEET 1,2,4,5, A1); NOTE (SHEET 2, J6); 142 OLD + 157 OLD INFO (SHEET 3, A6); NOTE (SHEET 4, B5); ALIGNMENT CLEARANCE MODEL FOR UPPER IDLER PULLEY (SHEET 5, A1); CHAIN LENGTH CALCULATION / IDLER PULLEY INFO (SHEET 6); CHANGE: GEOMETRY OF 3D MODEL "90-7518-190-070"; UDH &FULL_MOUNT_RD_FRAME_SPEC (DOCUMENT NAME) WAS UDH DERAILLEUR HANGER FRAME SPEC; NOTE (SHEET2, E2); OLD / AXLE LENGTH (SHEET 3, B8, H7); HANGERLESS INTERFACE (SHEET 5, E2) WAS UDH/NDG; SHEET 7 WAS SHEET 6;
G	TBRAKOWSKI	CHANGE: OLD / AXLE LENGTH (SH3, B8, H7); 90-7518-190-070.REV.G WAS 90-7518-190-070.REV.F;

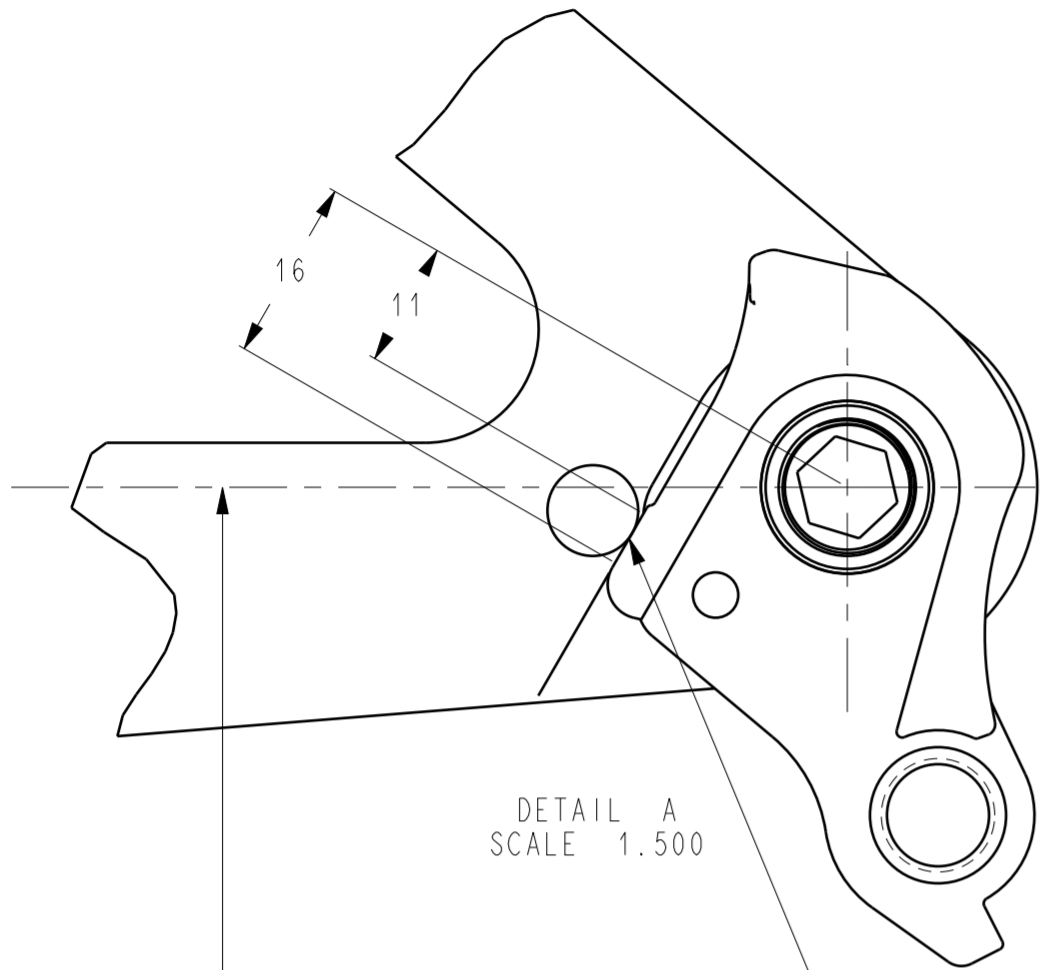


ALTERNATIVE DESIGN
WITH CYLINDRICAL PROTRUSION



ALL DIMENSIONS ARE mm	GEOMETRIC DIMENSIONING AND TOLERANCING TO BE INTERPRETED PER ASME Y14.5-2009	FORMAT: A2	SCALE: 0.500	SHEET: 1 / 7
THIRD ANGLE PROJECTION	☑ OR <kc> INDICATES QUALITY IS SENSITIVE TO VARIATION FROM TARGET	LIFECYCLE STATUS	 CONFIDENTIAL - THIS DRAWING CONTAINS INFORMATION THAT IS PROPRIETARY TO SRAM CORPORATION AND MAY NOT BE DISCLOSED WITHOUT PERMISSION.	
MASS (g)	0.0	DRAWING NAME / DESCRIPTION	UDH&FULL_MOUNT_RD_FRAME_SPEC	
MATERIAL		DRAWING NUMBER	90-7518-190-000	VERSION G.6

NAMED 3D MODELS CAN BE FOUND IN "UDH&FULL_MOUNT_RD_3D_MODELS_REV_G.stp".

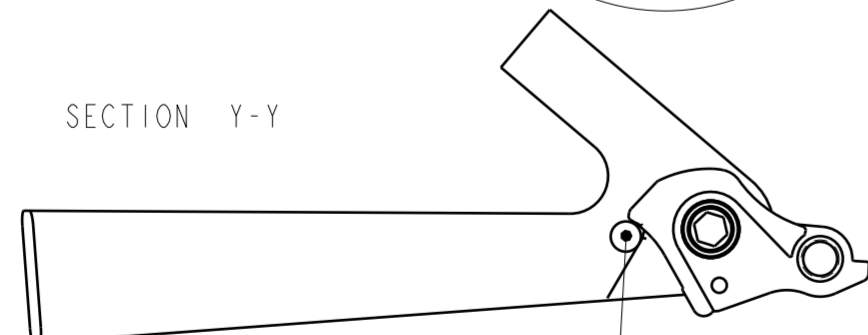
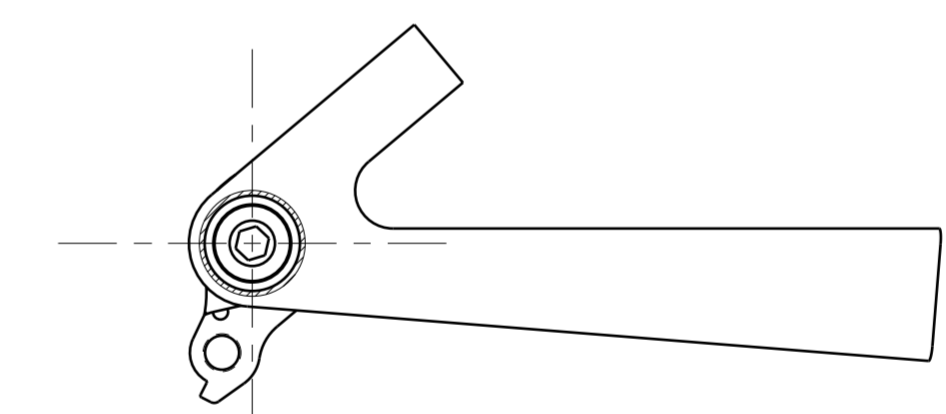
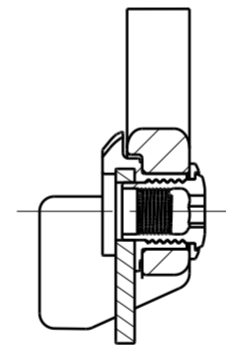
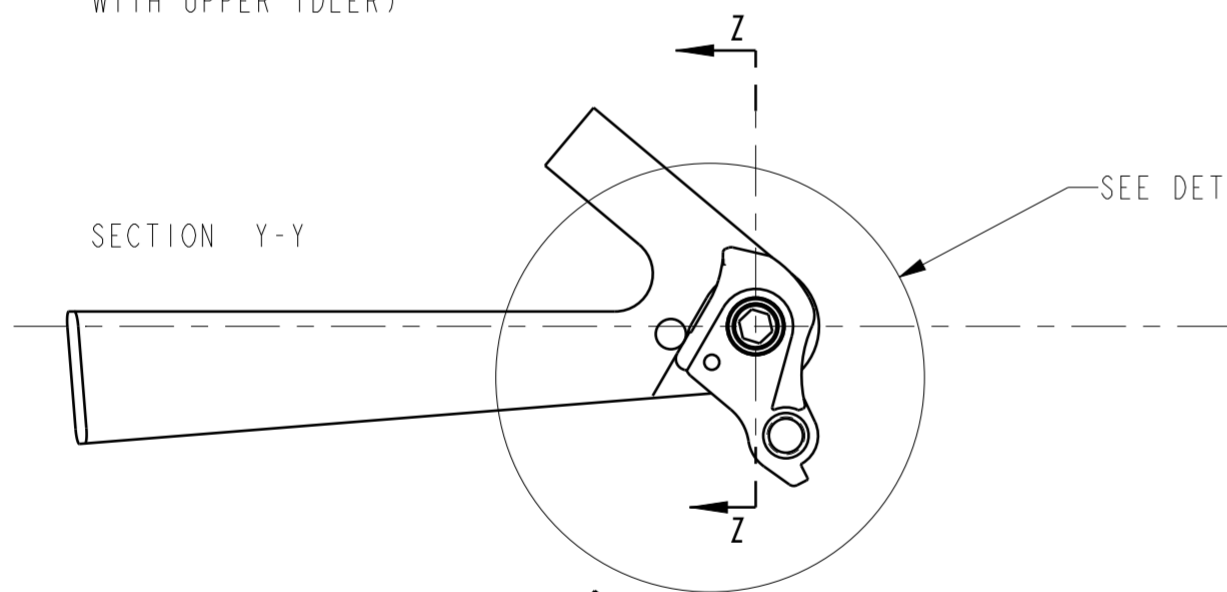
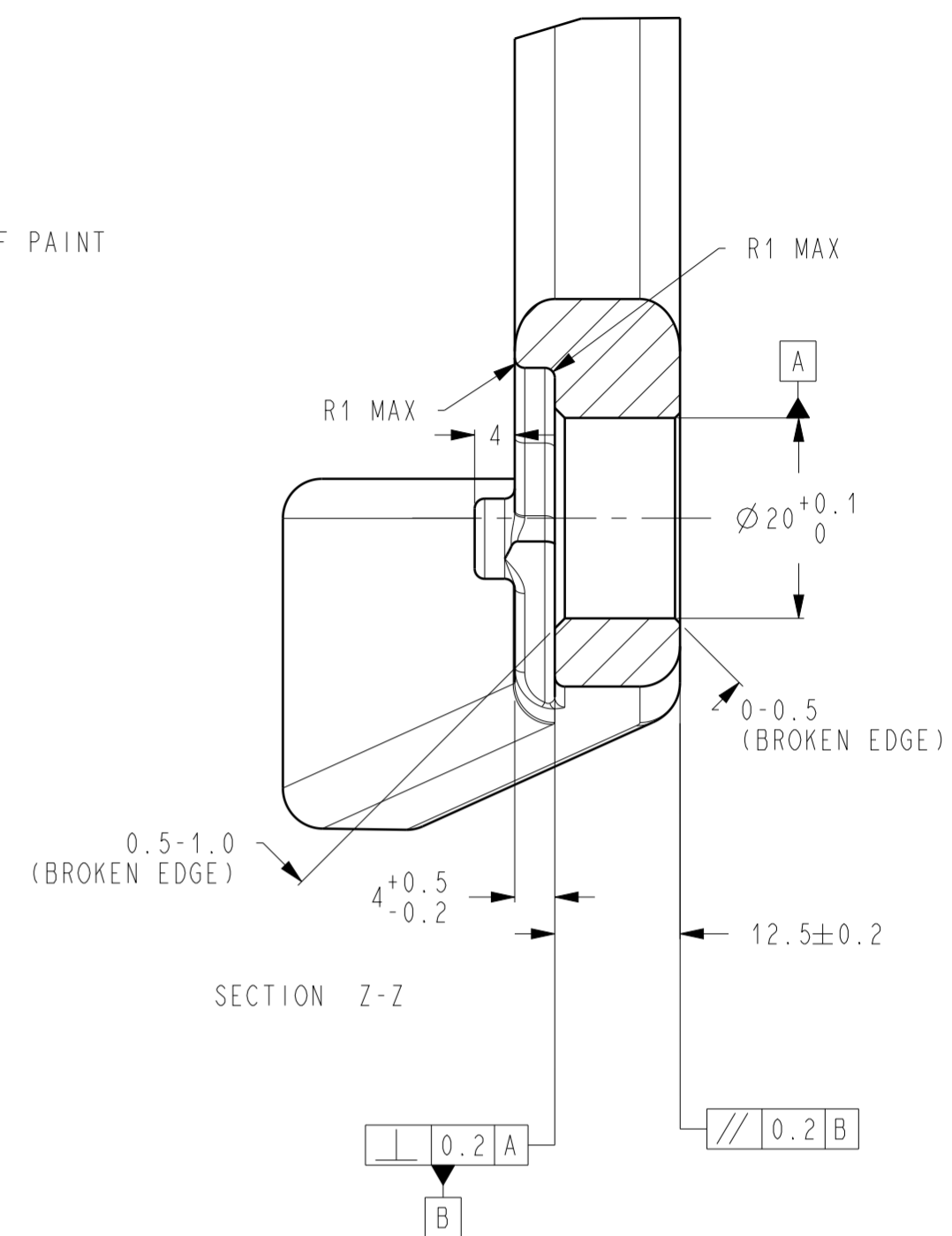
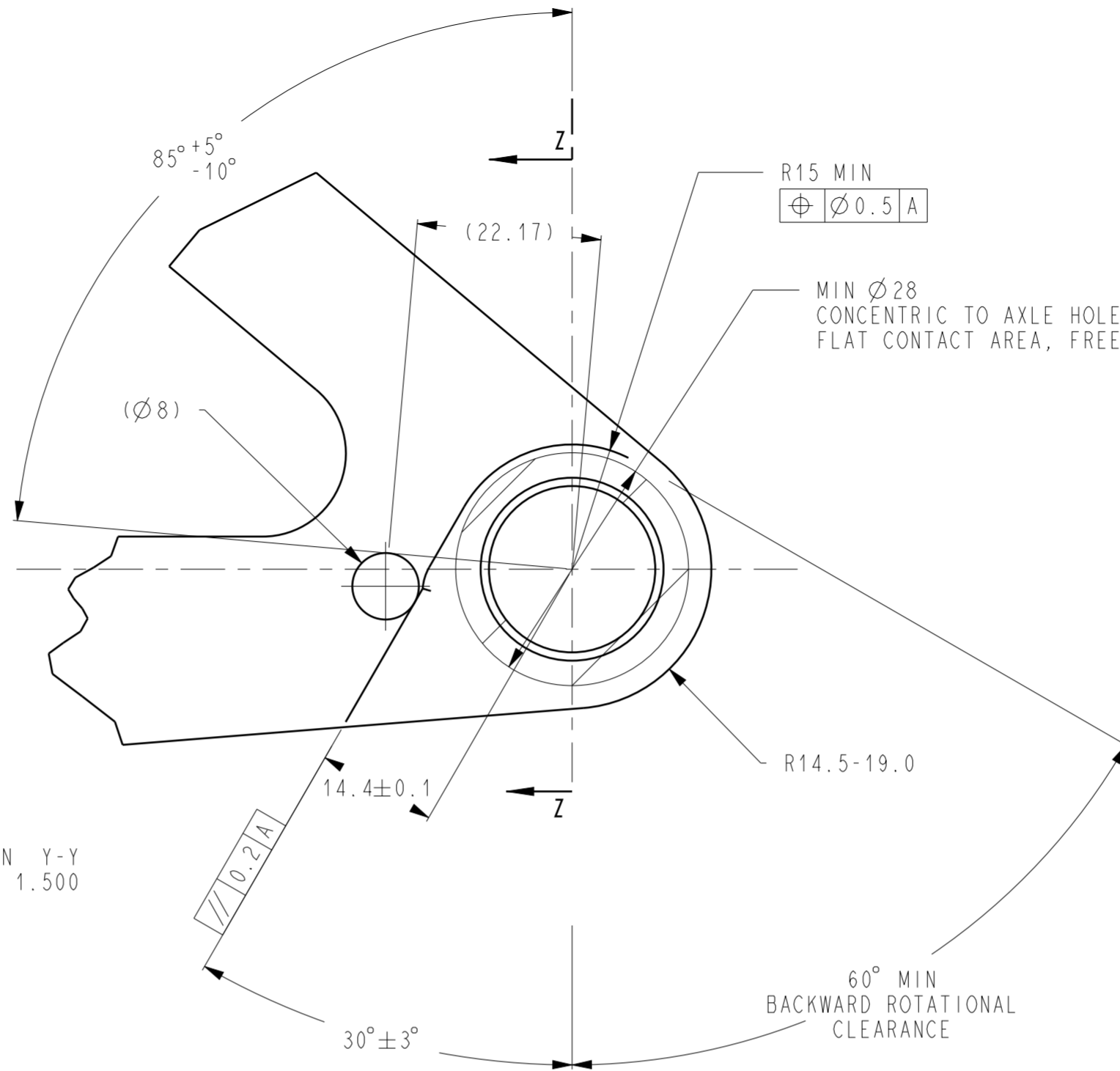


DETAIL A
SCALE 1.500

CONNECTION LINE
TO BB IN SAG MODE
(NOT FOR FRAMES
WITH UPPER IDLER)

FORWARD ROTATIONAL STOP
MIN CONTACT AREA = 10mm²

SECTION Y-Y
SCALE 1.500



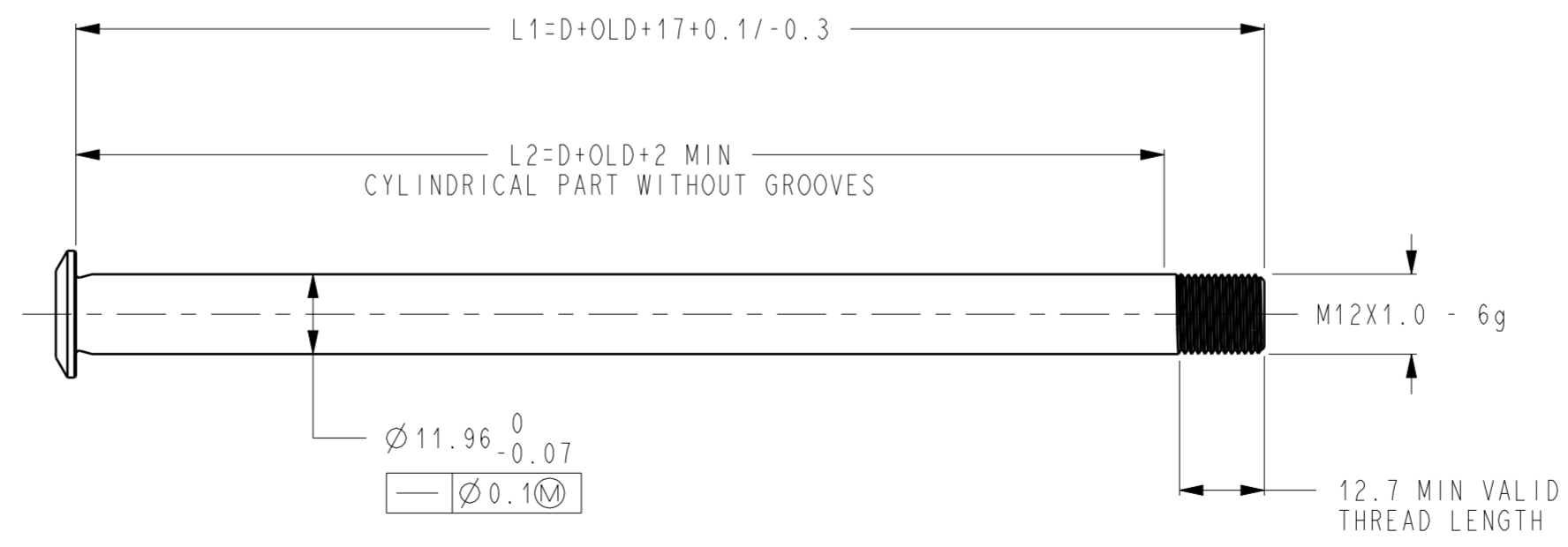
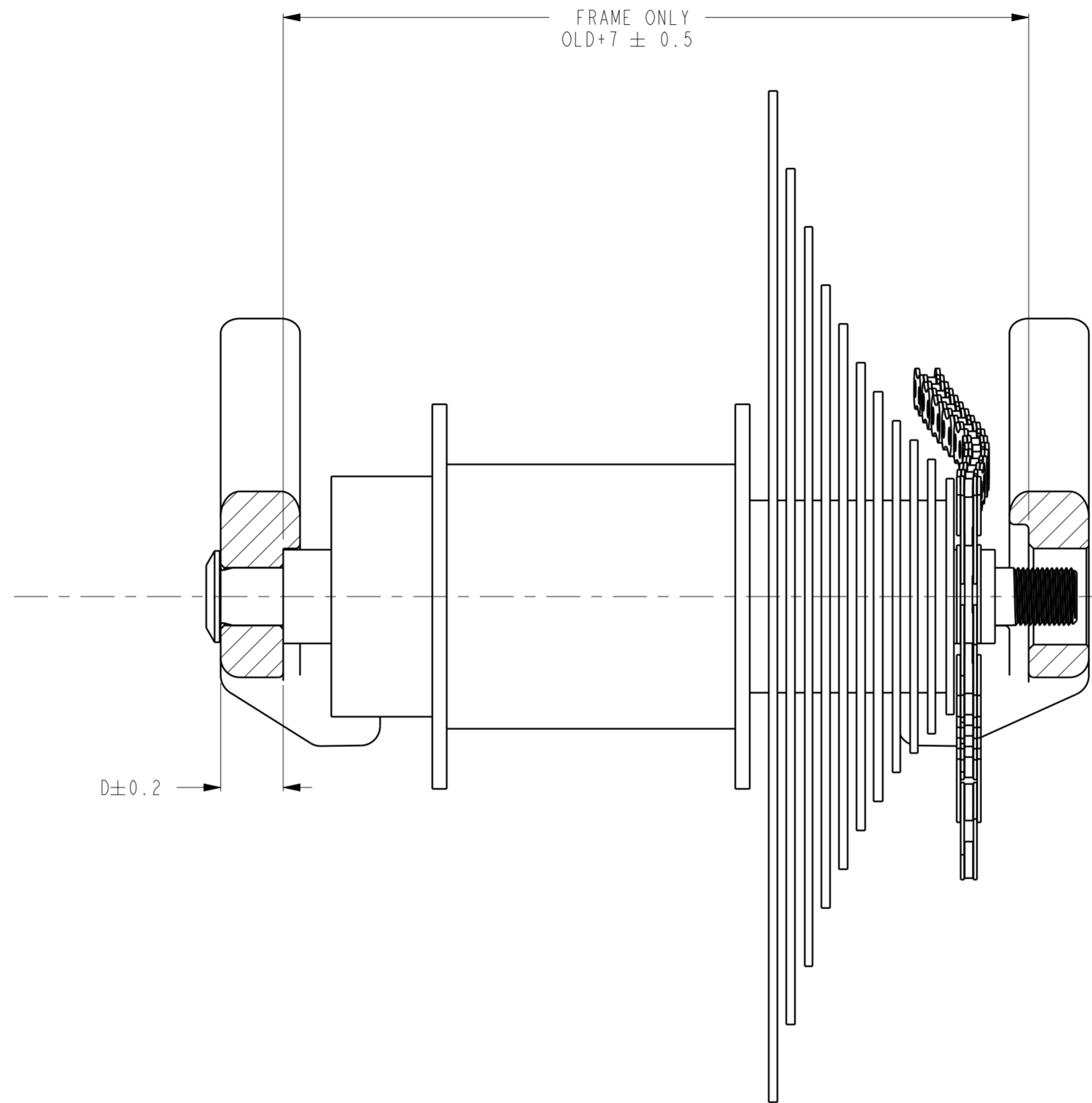
BACKWARD ROTATIONAL STOP
(CAN BE ANY KIND OF PROTRUSION
FREE TO FRAME DESIGNER'S PREFERENCE)

REFER TO HANGERLESS INTERFACE CLEARANCE MODEL
90-7518-190-070 REVISION G FOR 3D INSPECTION

USE DESCRIPTION ON SHEET 5 TO ALIGN THE CLEARANCE MODEL CORRECTLY

FORMAT: A2	SCALE: 0.500	SHEET: 2 / 7
LIFECYCLE STATUS Released	SRAM CONFIDENTIAL - THIS DRAWING CONTAINS INFORMATION THAT IS PROPRIETARY TO SRAM CORPORATION AND MAY NOT BE DISCLOSED WITHOUT PERMISSION.	
DRAWING NAME / DESCRIPTION UDH&FULL_MOUNT_RD_FRAME_SPEC		
DRAWING NUMBER 90-7518-190-000		VERSION G.6

APPLIES TO SYSTEMS WITH 142mm, 148mm or 157mm OLD

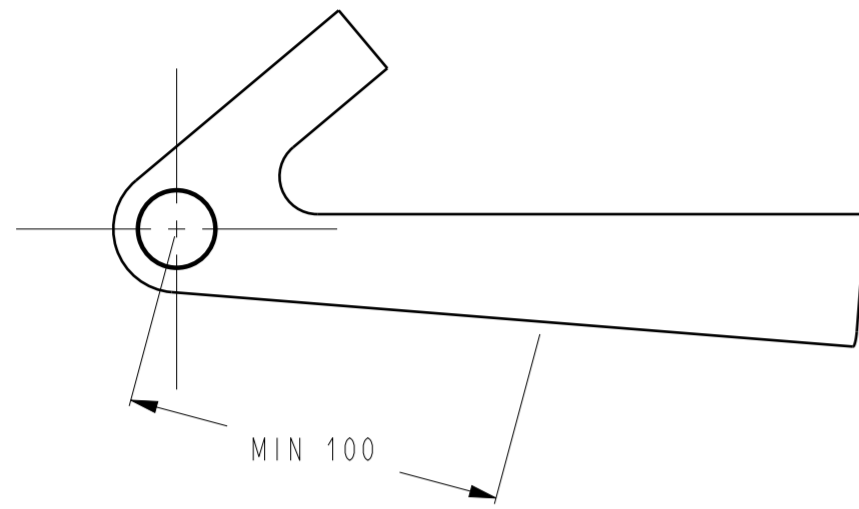


FORMAT: A2	SCALE: 1.000	SHEET: 3 / 7
LIFECYCLE STATUS Released	SRAM CONFIDENTIAL - THIS DRAWING CONTAINS INFORMATION THAT IS PROPRIETARY TO SRAM CORPORATION AND MAY NOT BE DISCLOSED WITHOUT PERMISSION.	
DRAWING NAME / DESCRIPTION UDH&FULL_MOUNT_RD_FRAME_SPEC		
DRAWING NUMBER 90-7518-190-000		VERSION G.6

NAMED 3D MODELS CAN BE FOUND IN "UDH&FULL_MOUNT_RD_3D_MODELS_REV.G.stp".

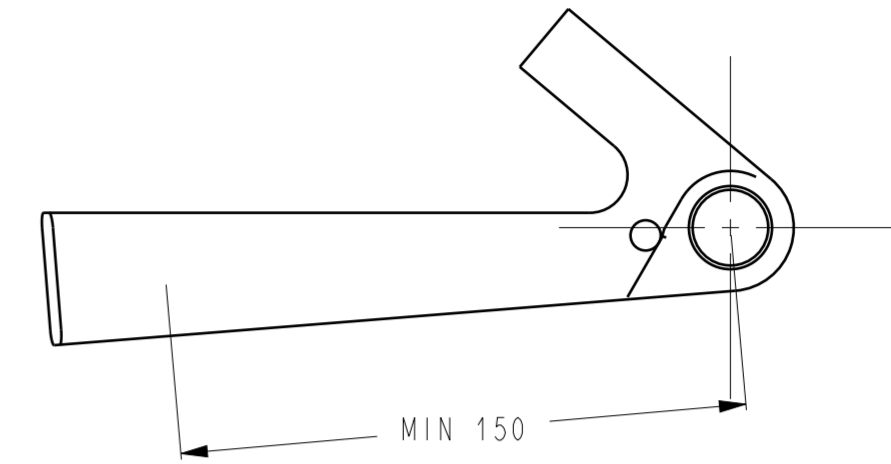
PROPOSED CABLE HOUSING EXIT POINTS AT THE FRAME
NEED TO BE VERIFIED DEPENDING ON THE SUSPENSION DESIGN

FOR COMPATIBILITY WITH THE AXS SRAM EXTENSION CORD, A CYLINDER (DIAMETER=5.8, LENGTH=19)
MUST PASS THROUGH THE DESIGNATED INTERNAL CABLE ROUTING PATH OF THE FRAME.

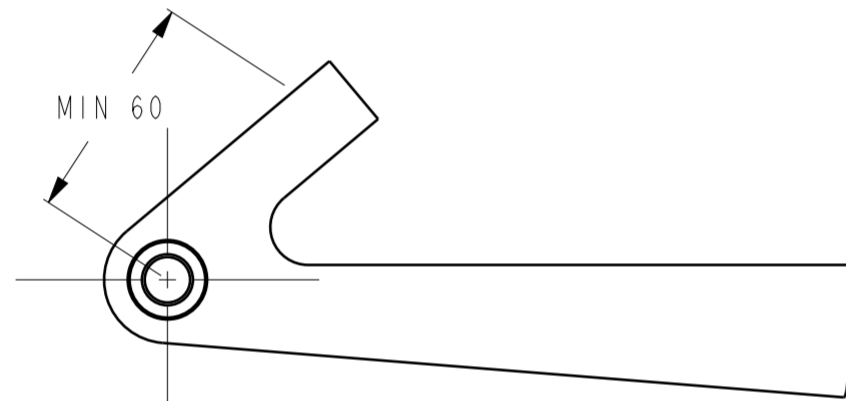


CABLE EXIT ON THE BOTTOM OF THE CHAINSTAY

REFER TO CLEARANCE MODEL 90-7518-190-070 REVISION G
FOR REQUIRED FRONT CABLE ENTRANCE CLEARANCE
AND FRONT CABLE ENTRANCE DUMMY 90-7518-190-090

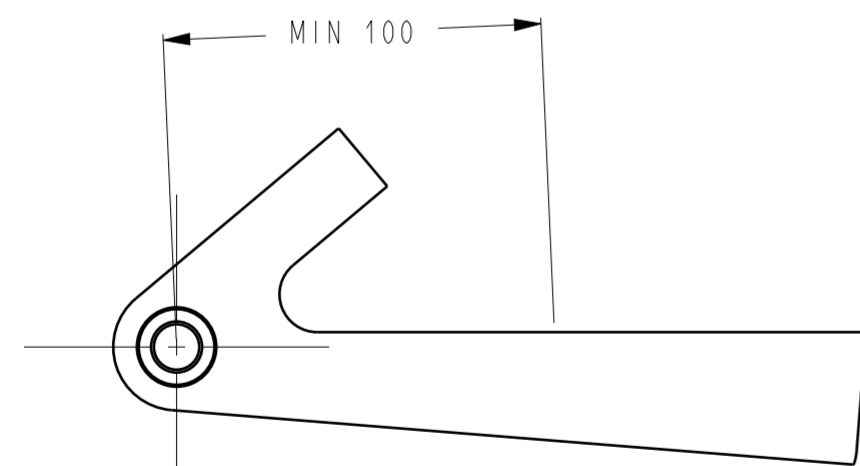


CABLE EXIT ON THE INSIDE OF THE CHAINSTAY



CABLE EXIT ON TOP OF THE SEAT STAY

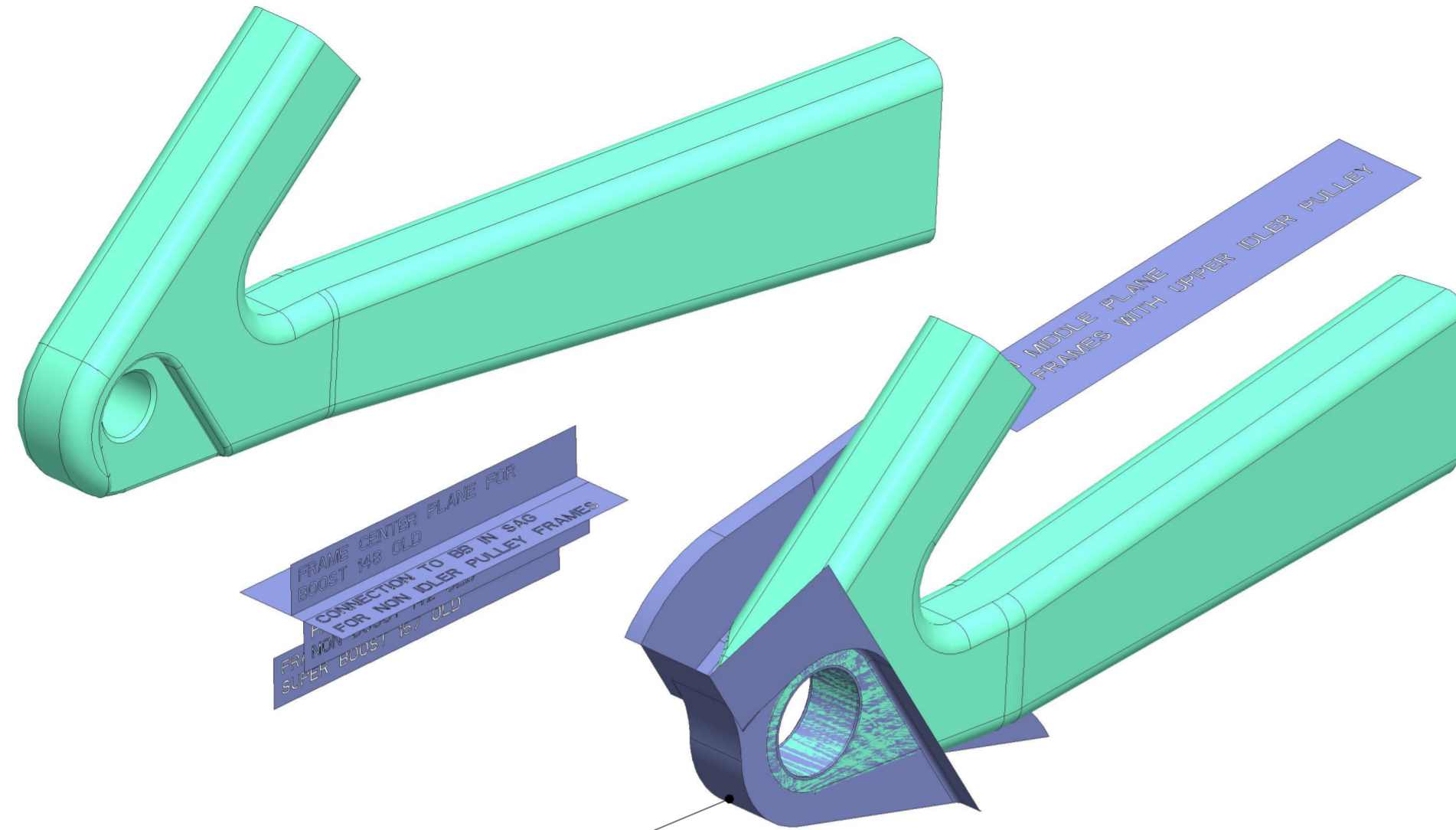
REFER TO REAR CABLE ENTRANCE DUMMY 90-7518-190-080
FOR REAR CABLE ENTRANCE LOCATION



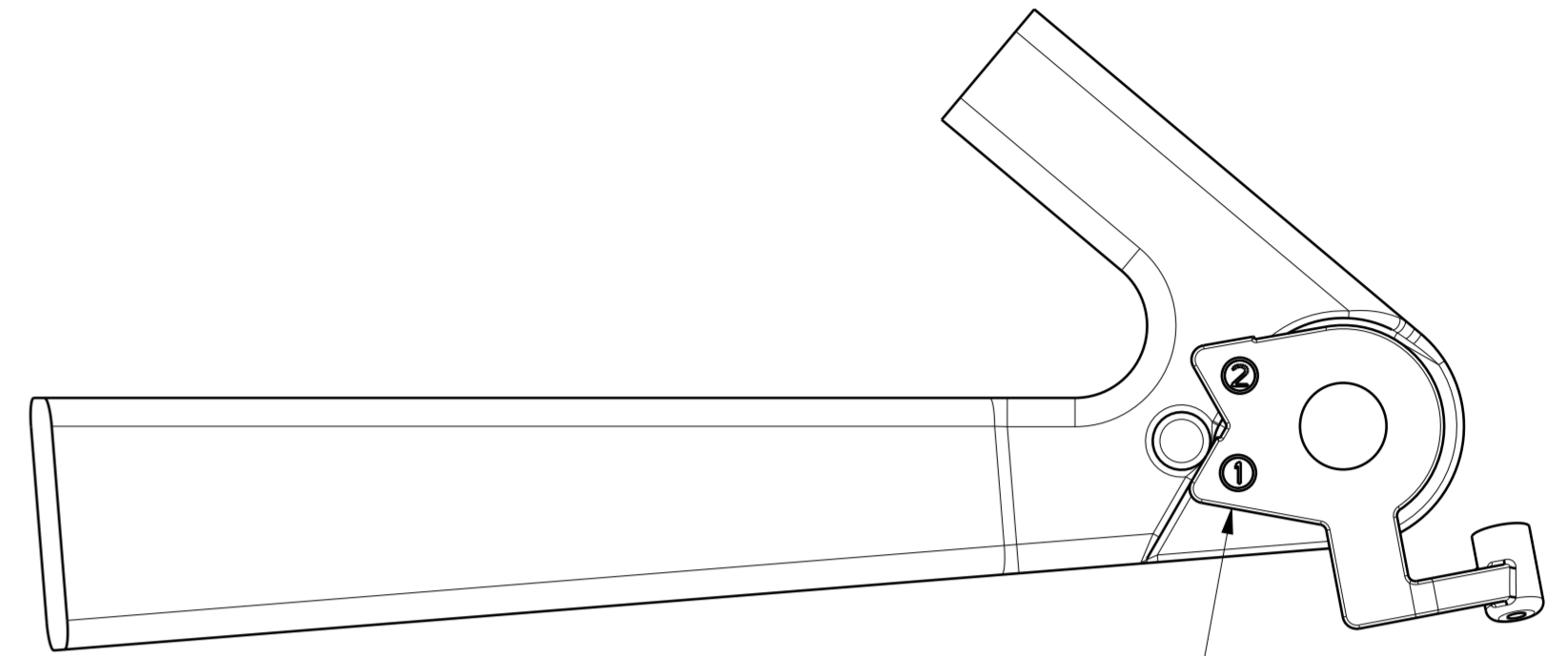
CABLE EXIT ON TOP OF THE CHAIN STAY

FORMAT: A2	SCALE: 0.500	SHEET: 4 / 7
LIFECYCLE STATUS Released	SRAM CONFIDENTIAL - THIS DRAWING CONTAINS INFORMATION THAT IS PROPRIETARY TO SRAM CORPORATION AND MAY NOT BE DISCLOSED WITHOUT PERMISSION.	
DRAWING NAME / DESCRIPTION UDH&FULL_MOUNT_RD_FRAME_SPEC		
DRAWING NUMBER 90-7518-190-000		VERSION G.6

PLEASE REFERENCE ALL MODELS USING THE COORDINATE SYSTEM WITH:
 X-AXIS ALIGNED WITH HUB AXIS.
 X-PLANE ALIGNED WITH END FACE OF DRIVE-SIDE HUB AXLE END CAP.
 FRAMES WITHOUT UPPER IDLER PULLEY: Y-AXIS ALIGNED WITH A PLANE DEFINED BY THE HUB AXIS AND THE BOTTOM BRACKET AXIS IN THE SAG POSITION.
 FRAMES WITH UPPER IDLER PULLEY: "CHAIN MIDDLE PLANE" ALIGNED WITH TANGENTIAL PLANE DEFINED BY THE SMALLEST COG PITCH CIRCLE DIAMETER (41.1mm) AND THE IDLER PULLEY PITCH CICLE DIAMETER IN THE SAG POSITION.
 NAMED 3D MODELS CAN BE FOUND IN "UDH&FULL_MOUNT_RD_3D_MODELS_REV.G.stp".

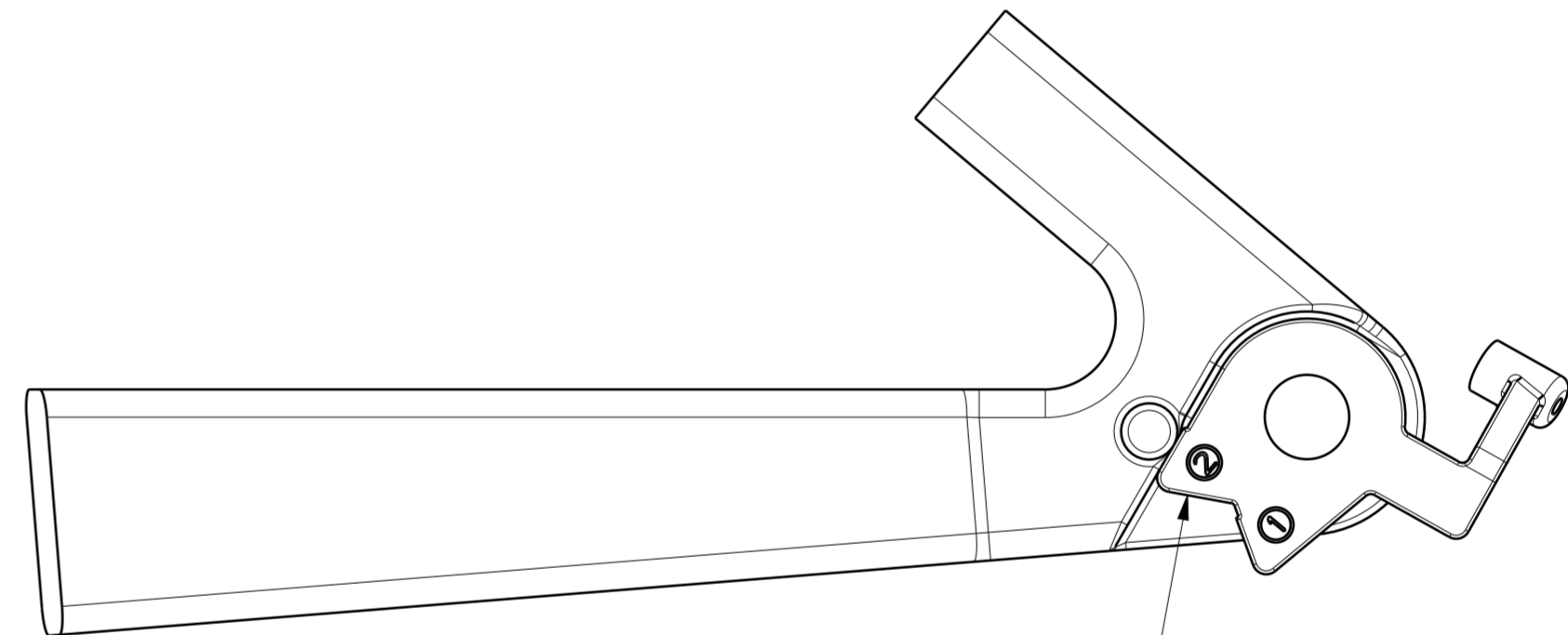


HANGERLESS INTERFACE CLEARANCE MODEL
 90-7518-190-070 REVISION G



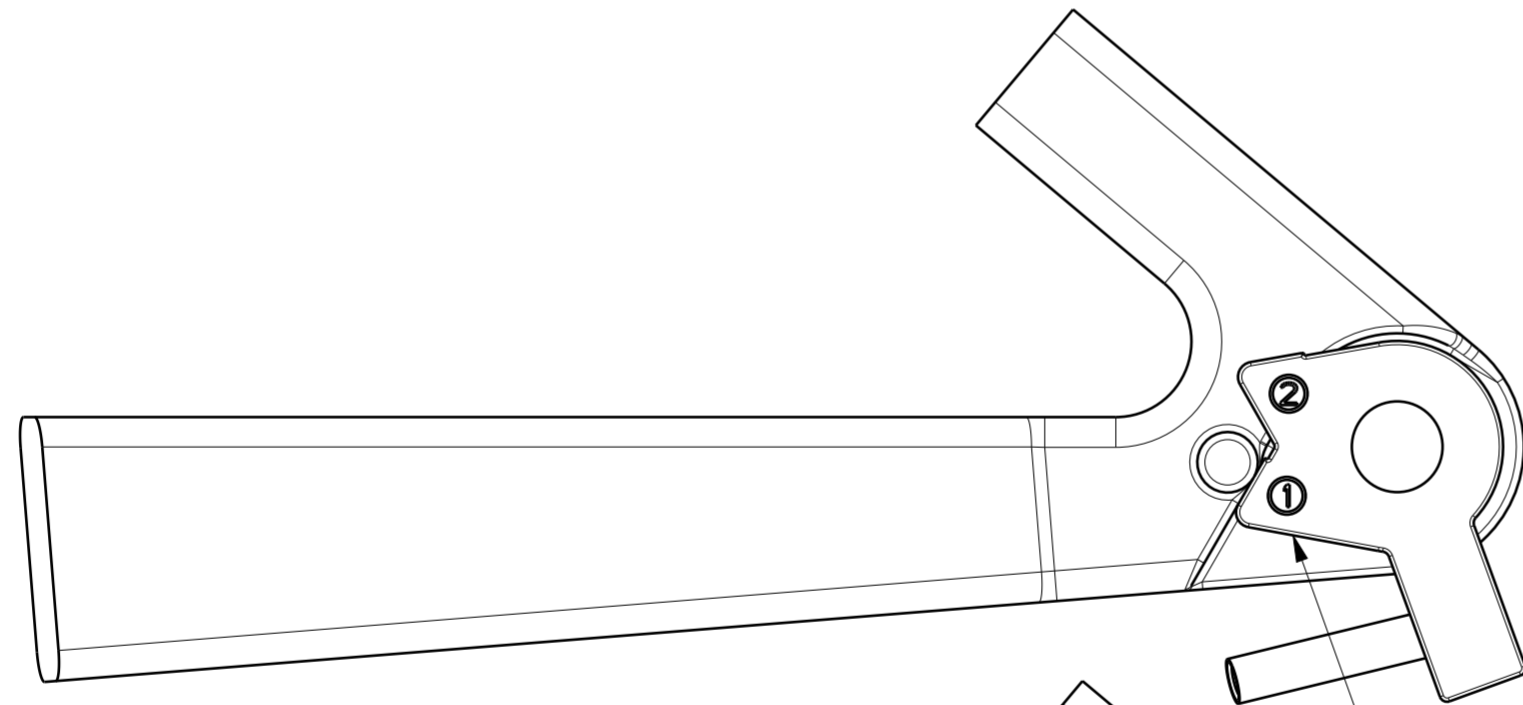
SECTION Y-Y

REAR CABLE ENTRANCE DUMMY 90-7518-190-080
 ALIGN TO CONTACT 1 FOR OPERATIONAL STATE



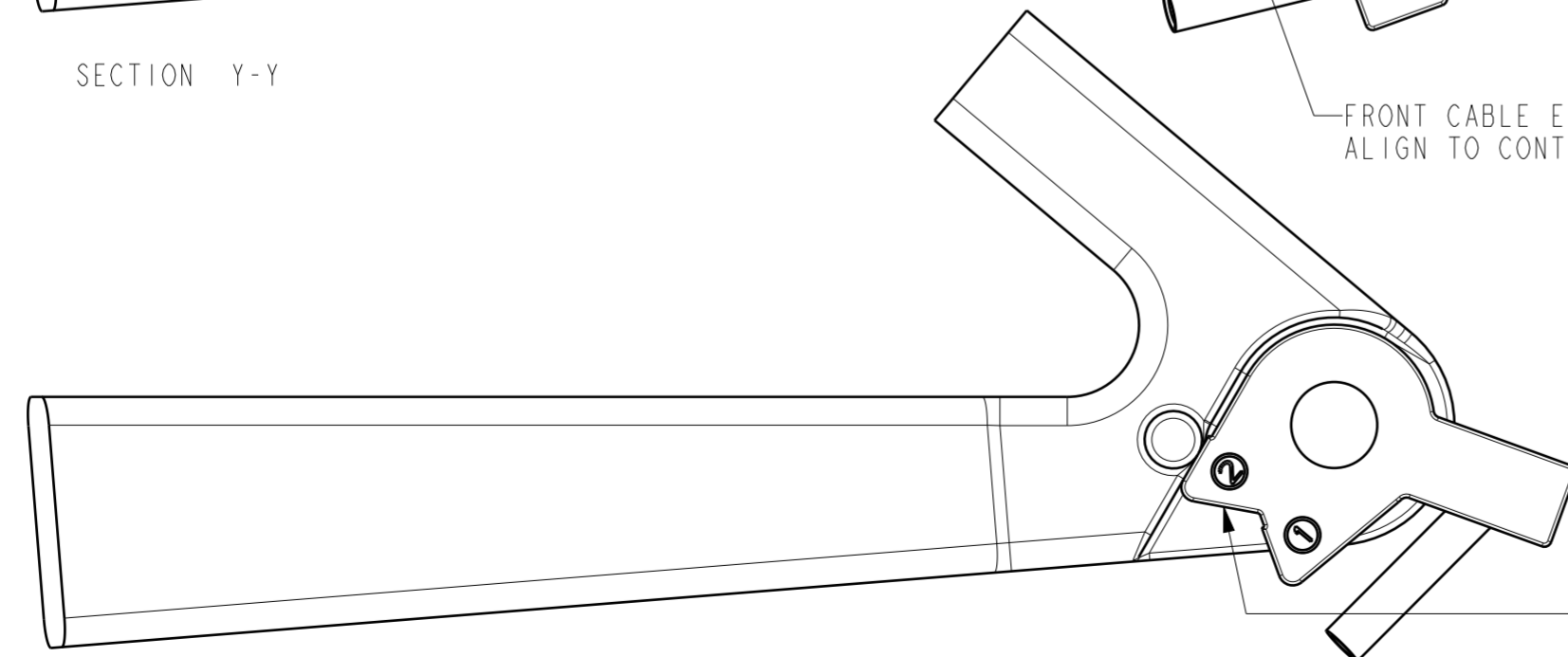
SECTION Y-Y

ALIGN TO CONTACT 2 FOR WHEEL REMOVAL STATE
 (50 DEGREES FROM OPERATIONAL STATE)



SECTION Y-Y

FRONT CABLE ENTRANCE DUMMY 90-7518-190-090
 ALIGN TO CONTACT 1 FOR OPERATIONAL STATE

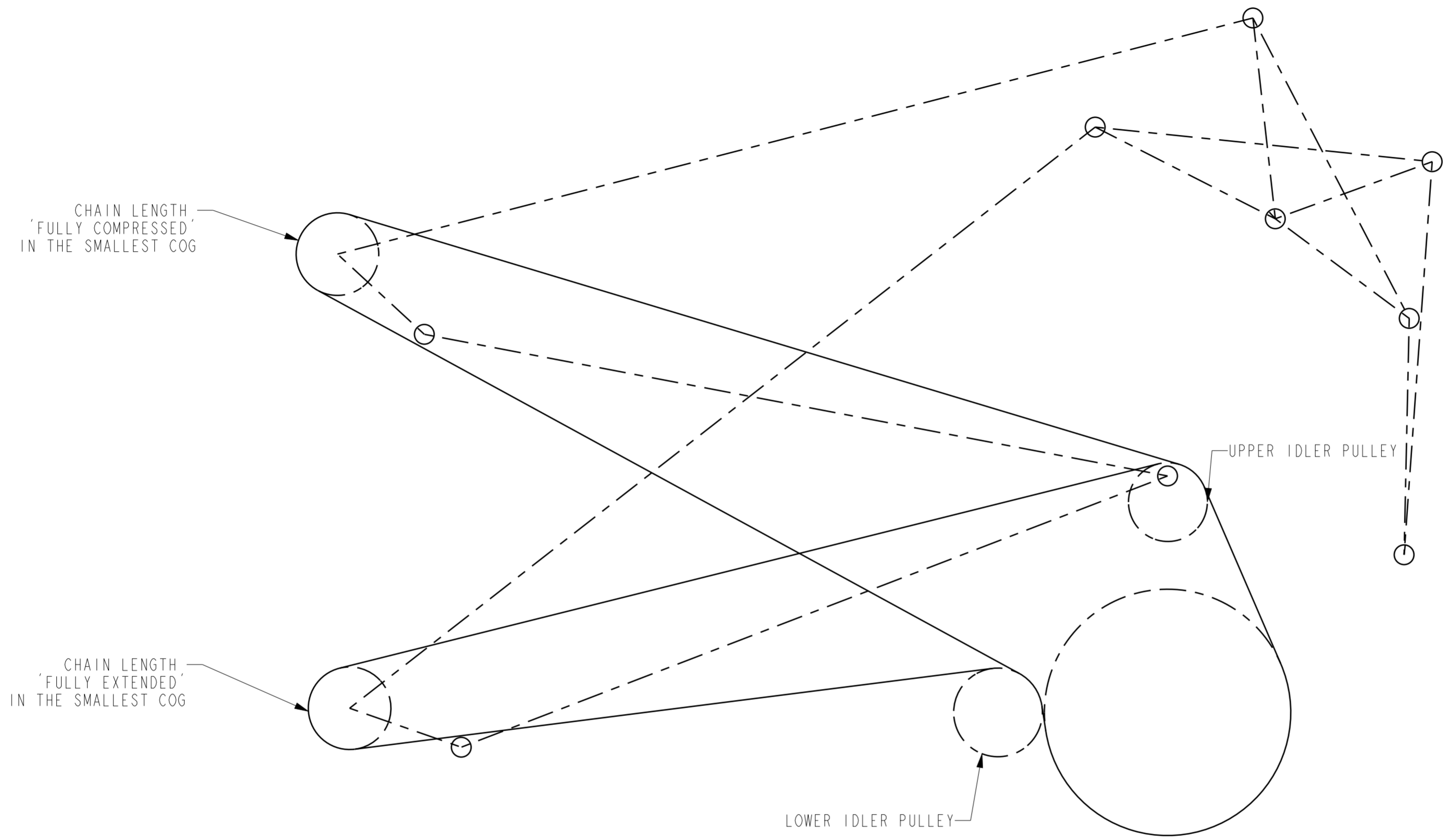


SECTION Y-Y

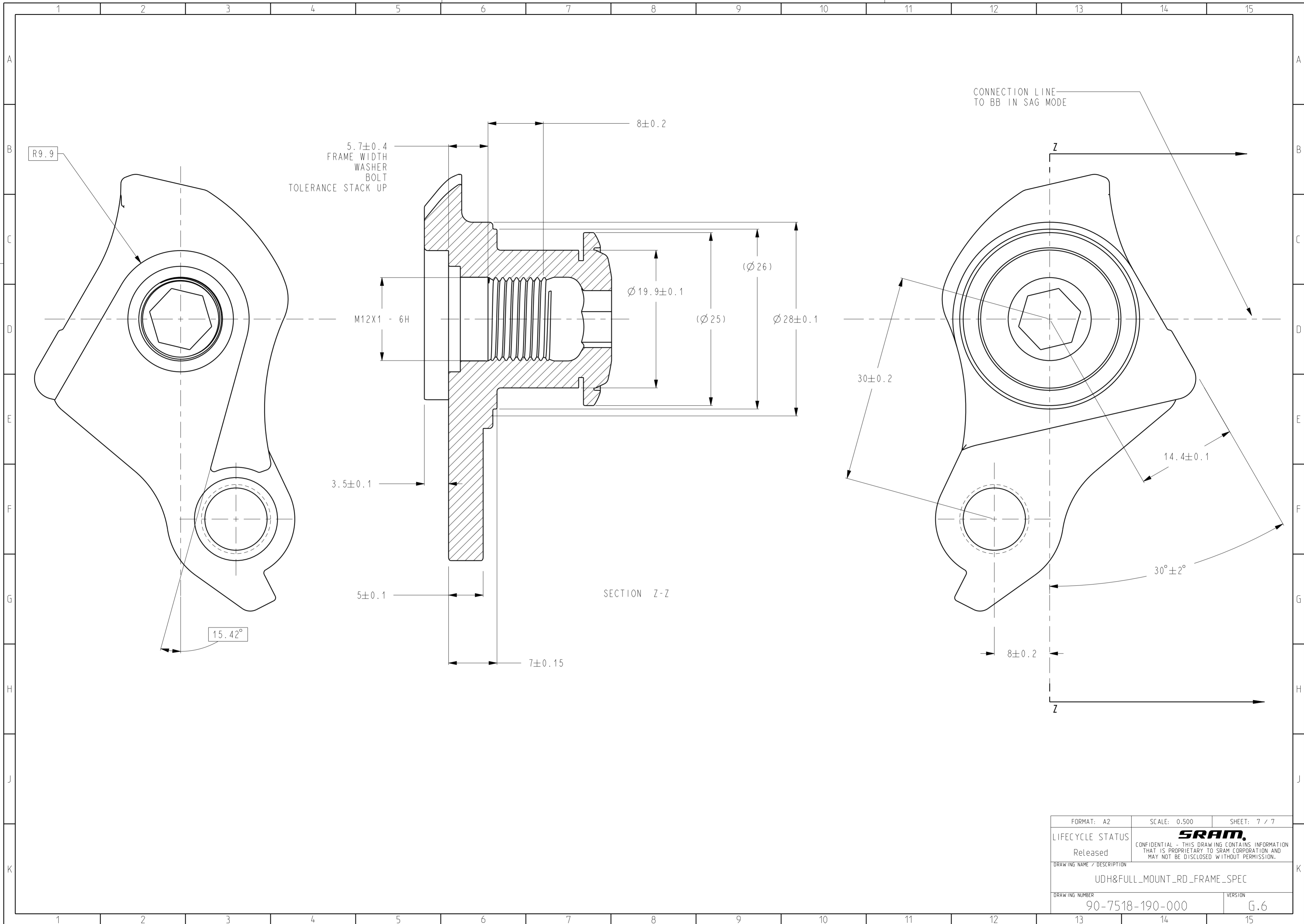
FRONT CABLE ENTRANCE DUMMY 90-7518-190-090
 ALIGN TO CONTACT 2 FOR WHEEL REMOVAL STATE
 (50 DEGREES FROM OPERATIONAL STATE)

FORMAT: A2	SCALE: 0.500	SHEET: 5 / 7
LIFECYCLE STATUS	SRAM CONFIDENTIAL - THIS DRAWING CONTAINS INFORMATION THAT IS PROPRIETARY TO SRAM CORPORATION AND MAY NOT BE DISCLOSED WITHOUT PERMISSION.	
Released		
DRAWING NAME / DESCRIPTION	UDH&FULL_MOUNT_RD_FRAME_SPEC	
DRAWING NUMBER	90-7518-190-000	VERSION
		G.6

A LOWER IDLER PULLEY IS STRONGLY RECOMMENDED TO STAY WITHIN THE CHAIN GROWTH SPECIFICATION AND ACHIEVE SUFFICIENT CHAIN WRAP ON THE CHAINRING IN ALL RIDING CONDITIONS.
 THE TOTAL CHAIN GROWTH IS DETERMINED BY CALCULATING THE DELTA BETWEEN CHAIN LENGTH 'FULLY COMPRESSED' AND CHAIN LENGTH 'FULLY EXTENDED' IN THE SMALLEST COG. THE TOTAL CHAIN GROWTH SHOULD NOT EXCEED 54mm
 LINKAGE MECHANISM IS JUST FOR ILLUSTRATION



FORMAT: A2	SCALE: 0.500	SHEET: 6 / 7
LIFECYCLE STATUS	SRAM CONFIDENTIAL - THIS DRAWING CONTAINS INFORMATION THAT IS PROPRIETARY TO SRAM CORPORATION AND MAY NOT BE DISCLOSED WITHOUT PERMISSION.	
Released		
DRAWING NAME / DESCRIPTION		
UDH&FULL_MOUNT_RD_FRAME_SPEC		
DRAWING NUMBER		VERSION
90-7518-190-000		G.6



FORMAT: A2	SCALE: 0.500	SHEET: 7 / 7
LIFECYCLE STATUS Released	SRAM CONFIDENTIAL - THIS DRAWING CONTAINS INFORMATION THAT IS PROPRIETARY TO SRAM CORPORATION AND MAY NOT BE DISCLOSED WITHOUT PERMISSION.	
DRAWING NAME / DESCRIPTION UDH&FULL_MOUNT_RD_FRAME_SPEC		
DRAWING NUMBER 90-7518-190-000		VERSION G.6