

Possible design variants of the

Hangerless Interface



The Hangerless Interface

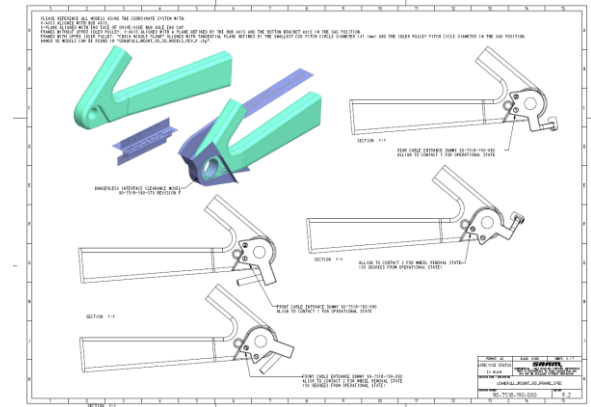
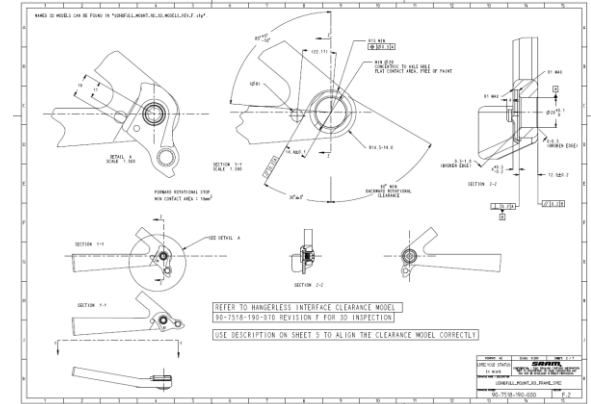
The “UDH&FULL_MOUNT_RD_FRAME_SPEC.pdf” defines the dimensional requirements for the Hangerless Interface. In addition to the design shown in the specification, this document shows other design variants that also fulfill the requirements of the specification.

There must be one element that defines the angular position of the UDH when mounted.

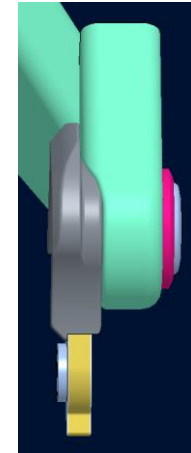
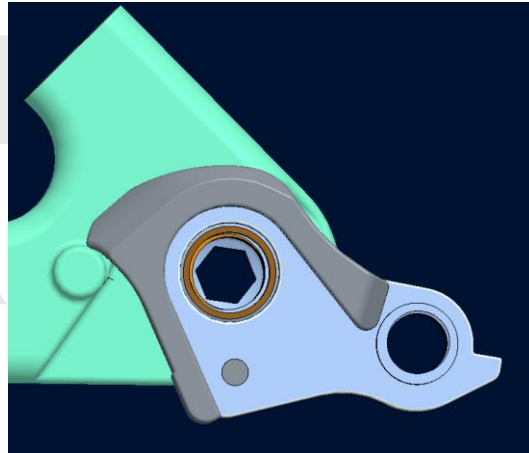
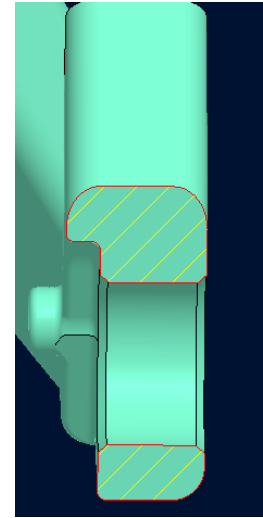
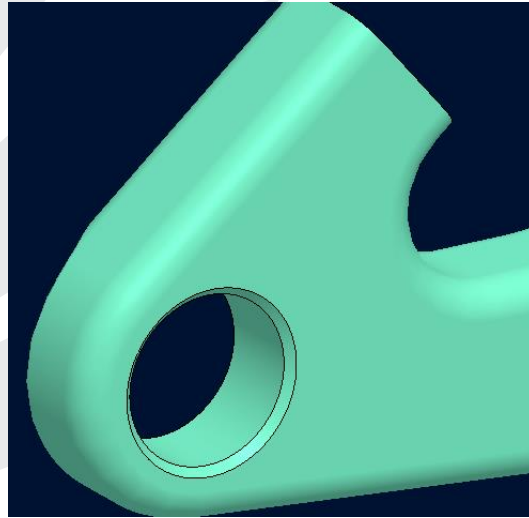
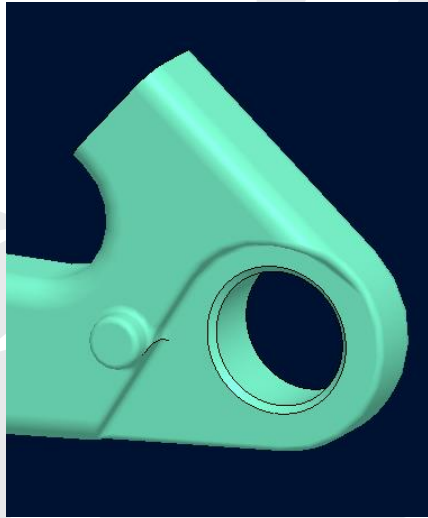
Another element is recommended to stop the rotation, when the UDH has fully swung back. This is also needed to take up the removal torque when disassembling the UDH.

Feel free to contact your account manager if you have any questions regarding the Hangerless Interface.

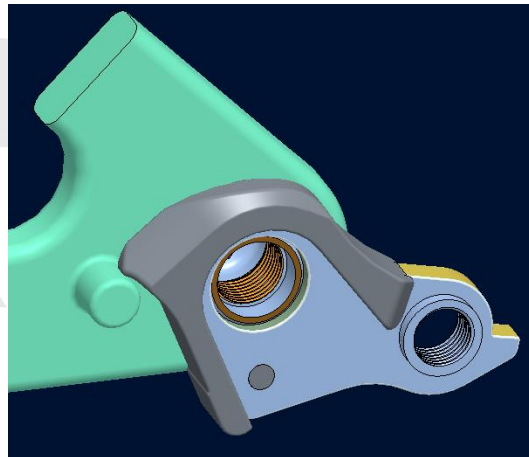
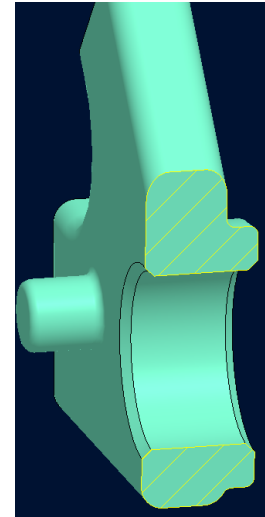
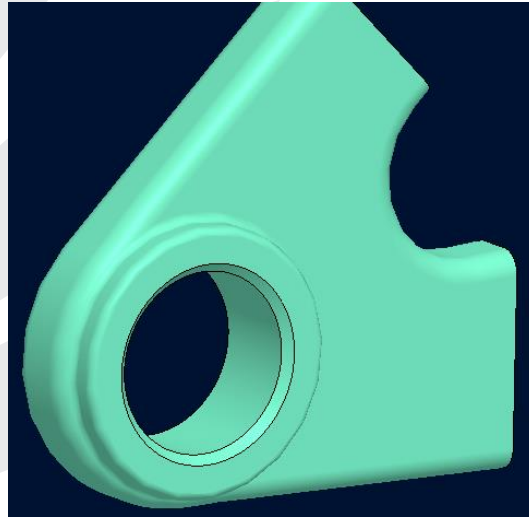
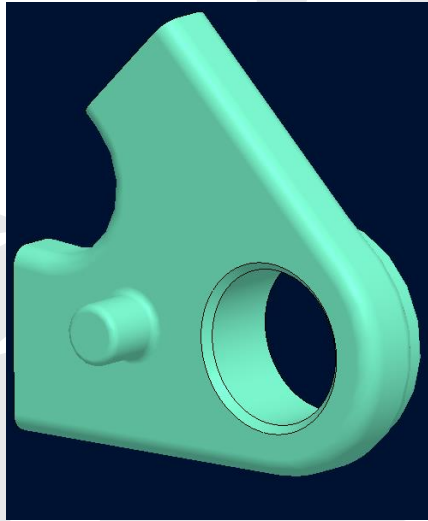
A CAD review of your design by the SRAM drive train team is highly recommended.



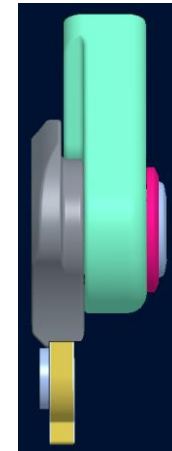
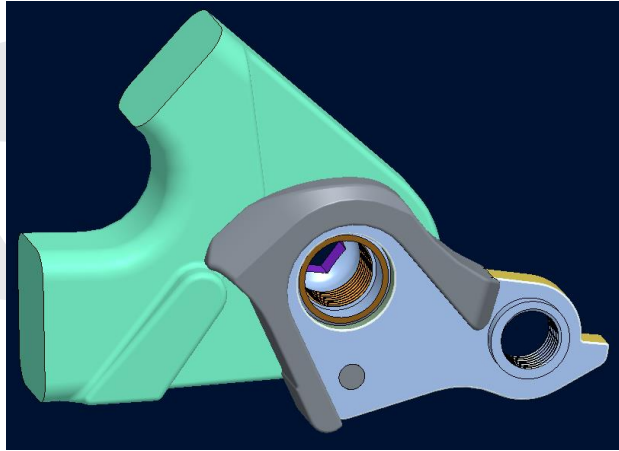
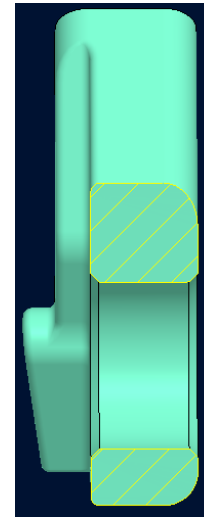
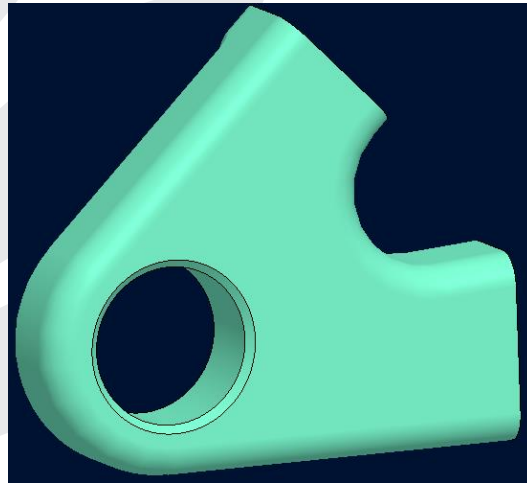
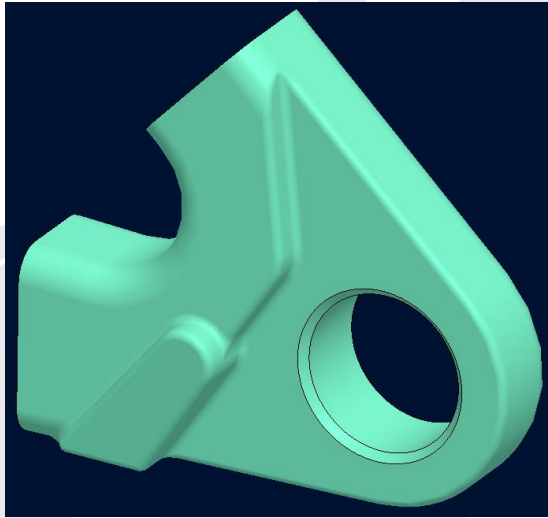
Design variant 1



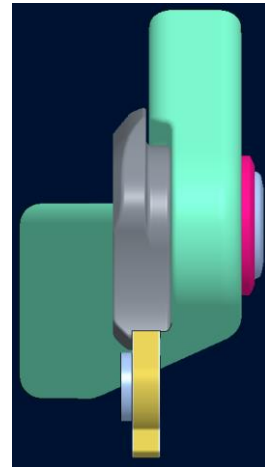
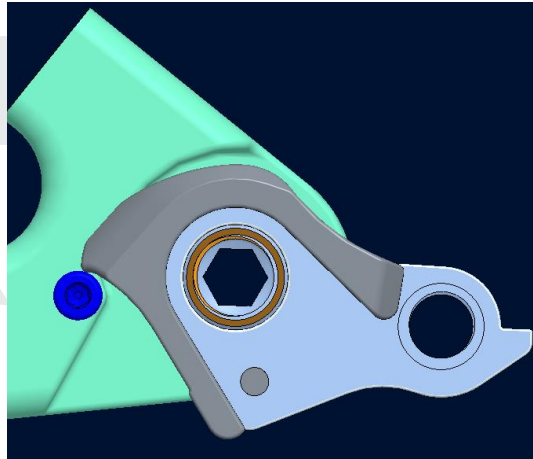
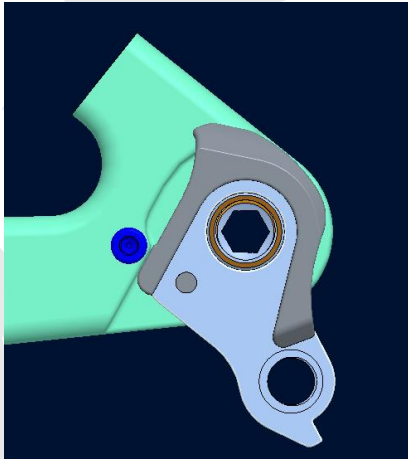
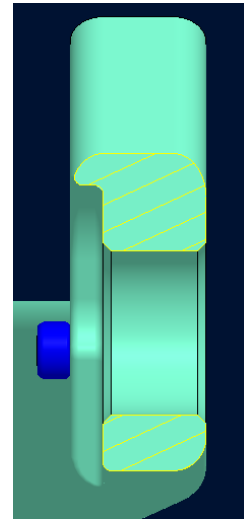
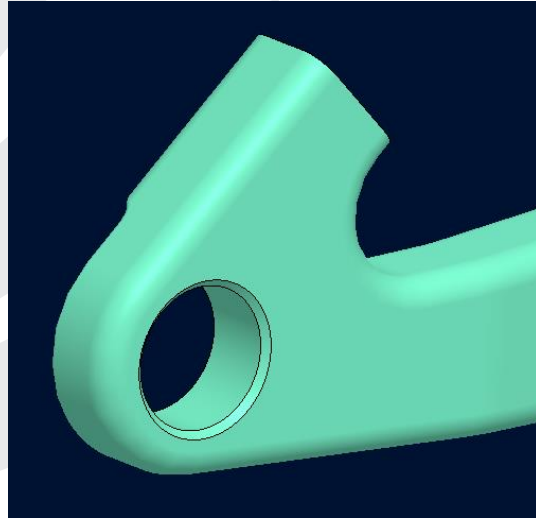
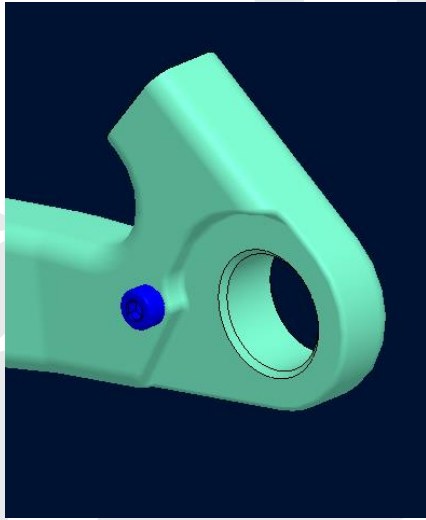
Design variant 2



Design variant 3



Design variant 4



Design variant 5

